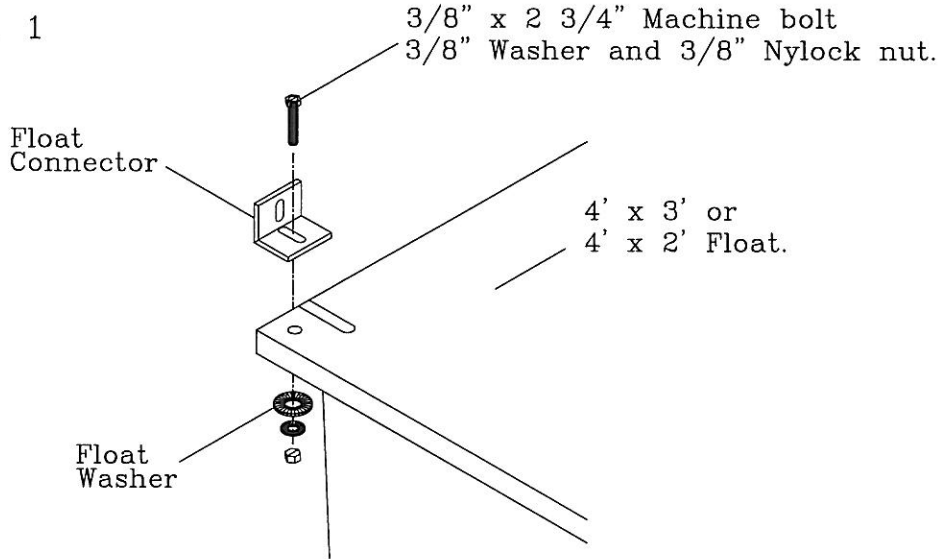


FLOAT CONNECTION ON TRUSS DOCK

STEP 1. Attach four connector angles to each float with (1) 3/8" x 2 3/4" machine bolt, (1) float washer, (1) 3/8" washer and (1) Nylock nut per connector. The long slot in the connector angle goes toward the float. The bolt goes through the slot in the float as shown in figure 1. Do not tighten these bolts at this time.

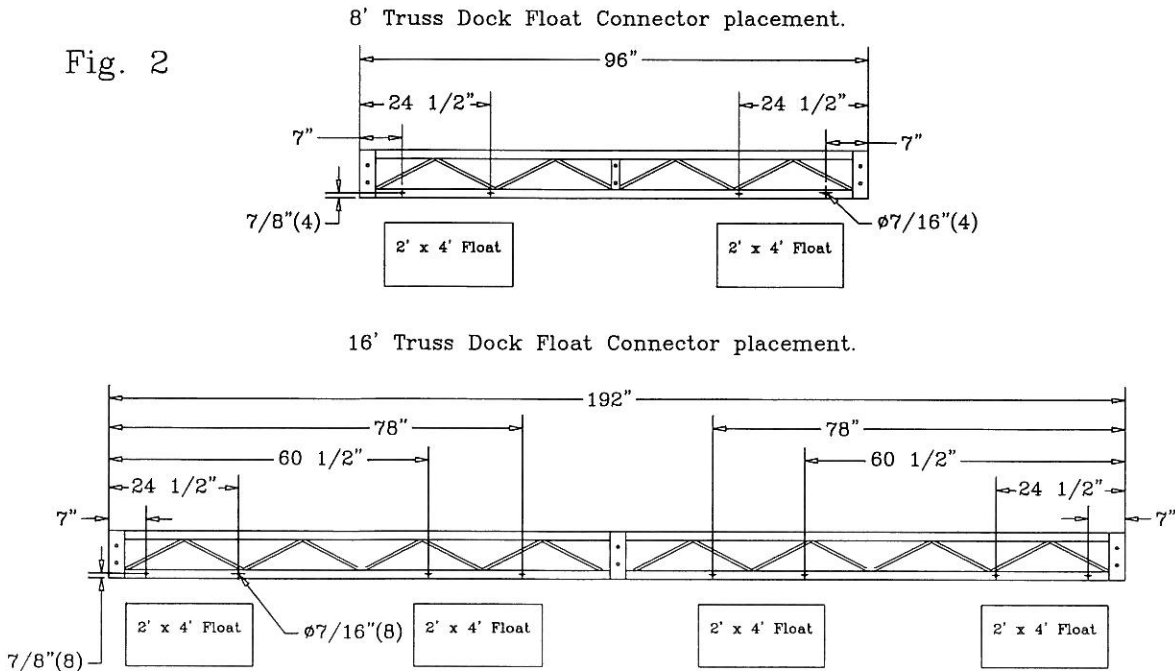
NOTE: Nylock nuts must not be reused. If a Nylock nut is removed it must be replaced with a new Nylock nut.

Fig. 1



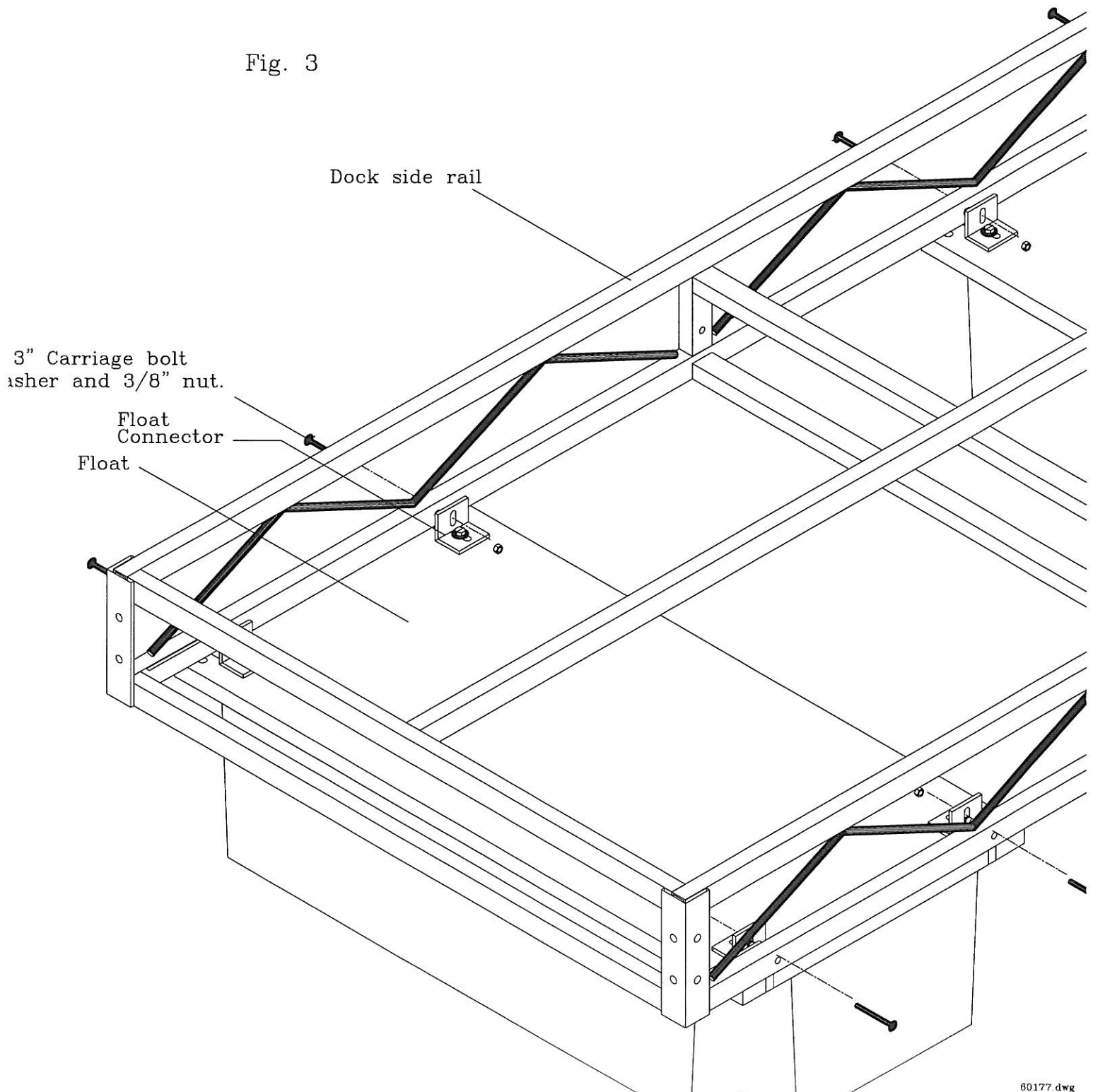
STEP 2. Two holes will be drilled in each side of the dock to connect each float (a total of 4 holes per float). Interference between float connectors and dock connections may occur in some dock configurations. This can be checked by laying out the dock and placing the dock connections (Solid State Connectors, Pipe Brackets, Solid State Corners, etc.) If no interference is found, drill holes as shown in figure 2, otherwise, adjust float placement accordingly.

Fig. 2

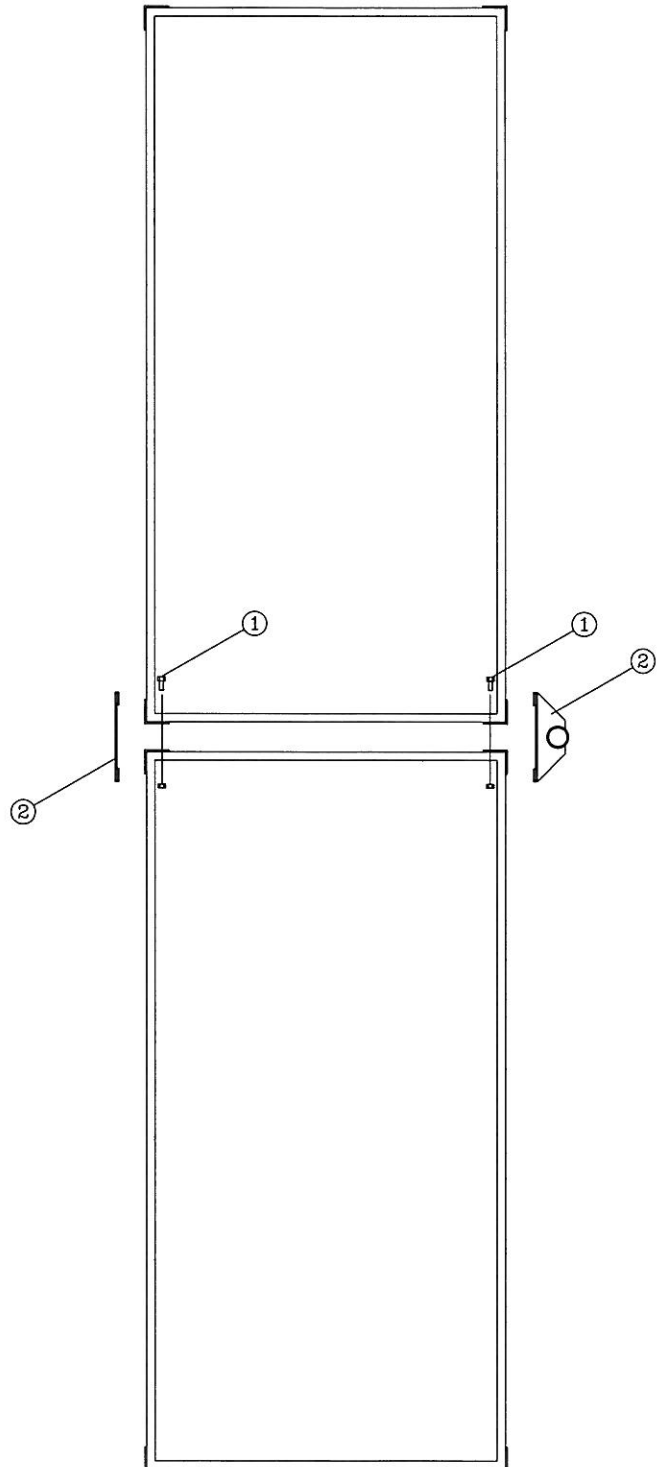


STEP 3. Place the float with the attached connectors under the dock frame. Attach the float to the dock frame with (1) 3/8" x 3" carriage bolt, (1) 3/8" washer and (1) 3/8" nut at each connector as shown in figure 3. Tighten all nuts at this time.

Fig. 3



Floating Truss Dock End to End Connection

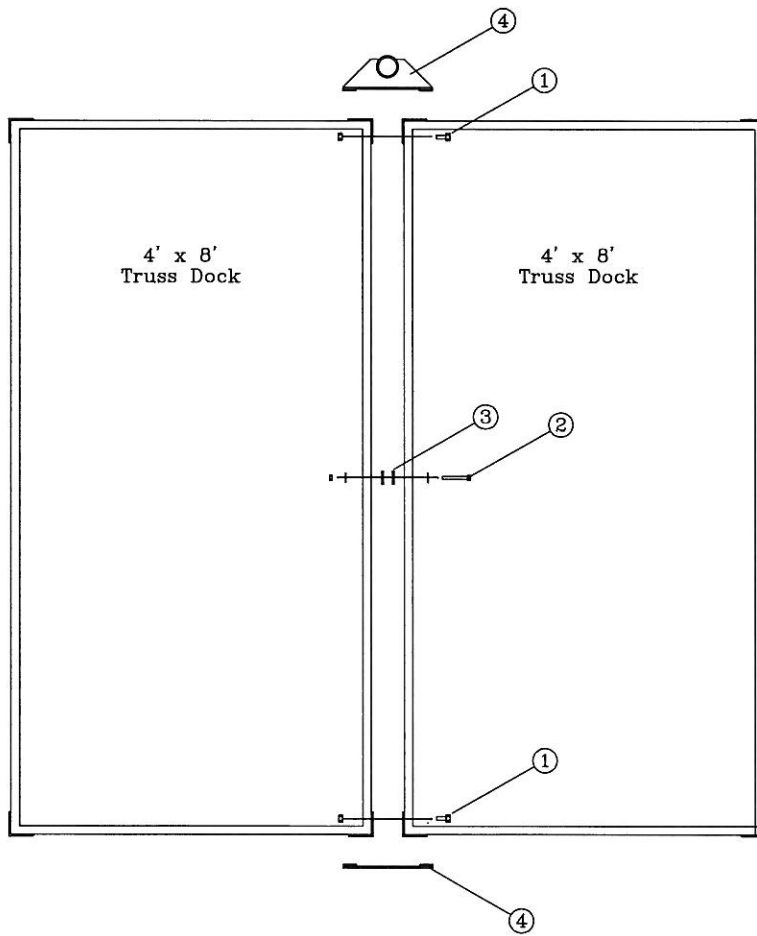


1. (2) 1/2" X 1" Machine Bolts, (2) 1/2" Jam Nuts
 2. Solid State Connector or Pipe bracket
- 60177A.DWG

A Floating Truss, End to End Bolt Bag
Part# ***** is required for this connection.

Qty	Part Number	Description
4	MM120100B	1/2" x 1" Machine Bolt
4	M12JAMNUT	1/2" Jam Nut

Floating Truss Dock Side By Side Connection 4' x 8' Sections

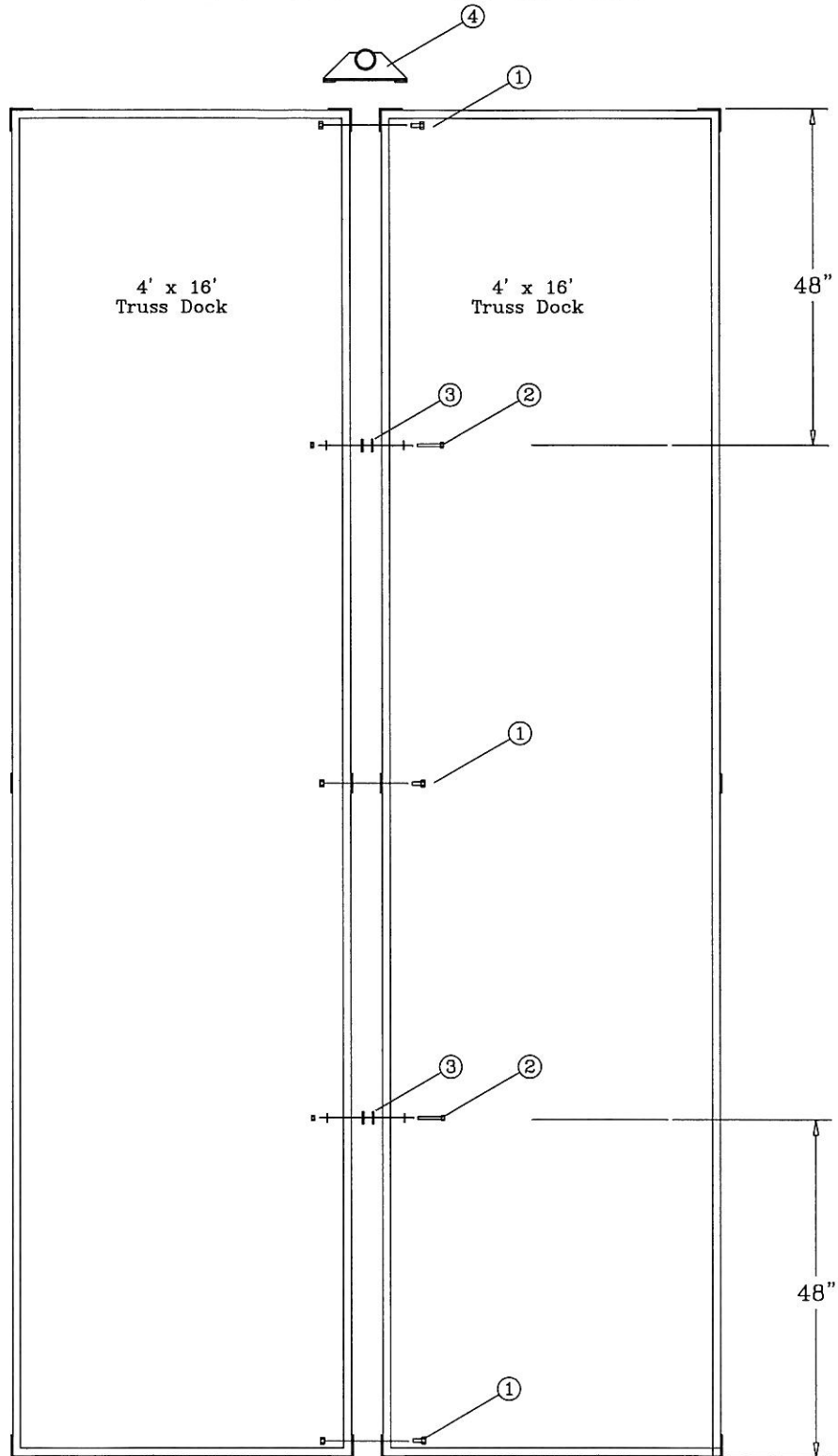


1. (2) 1/2" X 1" Machine Bolts, (2) 1/2" Jam Nuts
 2. (2) 3/8" x 3 1/2" Bolts, (4) 3/8" Washers and (2) 3/8" Nuts.
 3. (4) 1/4" Spacers
 4. Solid State Connector or Pipe bracket
- 60177A.DWG

A Floating WAD, 8' Side by Side Bolt Bag
Part# ***** is required for this connection.

Qty	Part Number	Description
2	MM380312B	3/8" x 3 1/2" Machine Bolt
4	MM120100B	1/2" x 1" Machine Bolt
4	M380WASHR	3/8" Washer
2	M380RGNUT	3/8" Hex Nut
4	M12JAMNUT	1/2" Jam Nut
4	45800175H	1 Hole Spacer

Floating Truss Dock Side By Side Connection 4' x 16' Sections

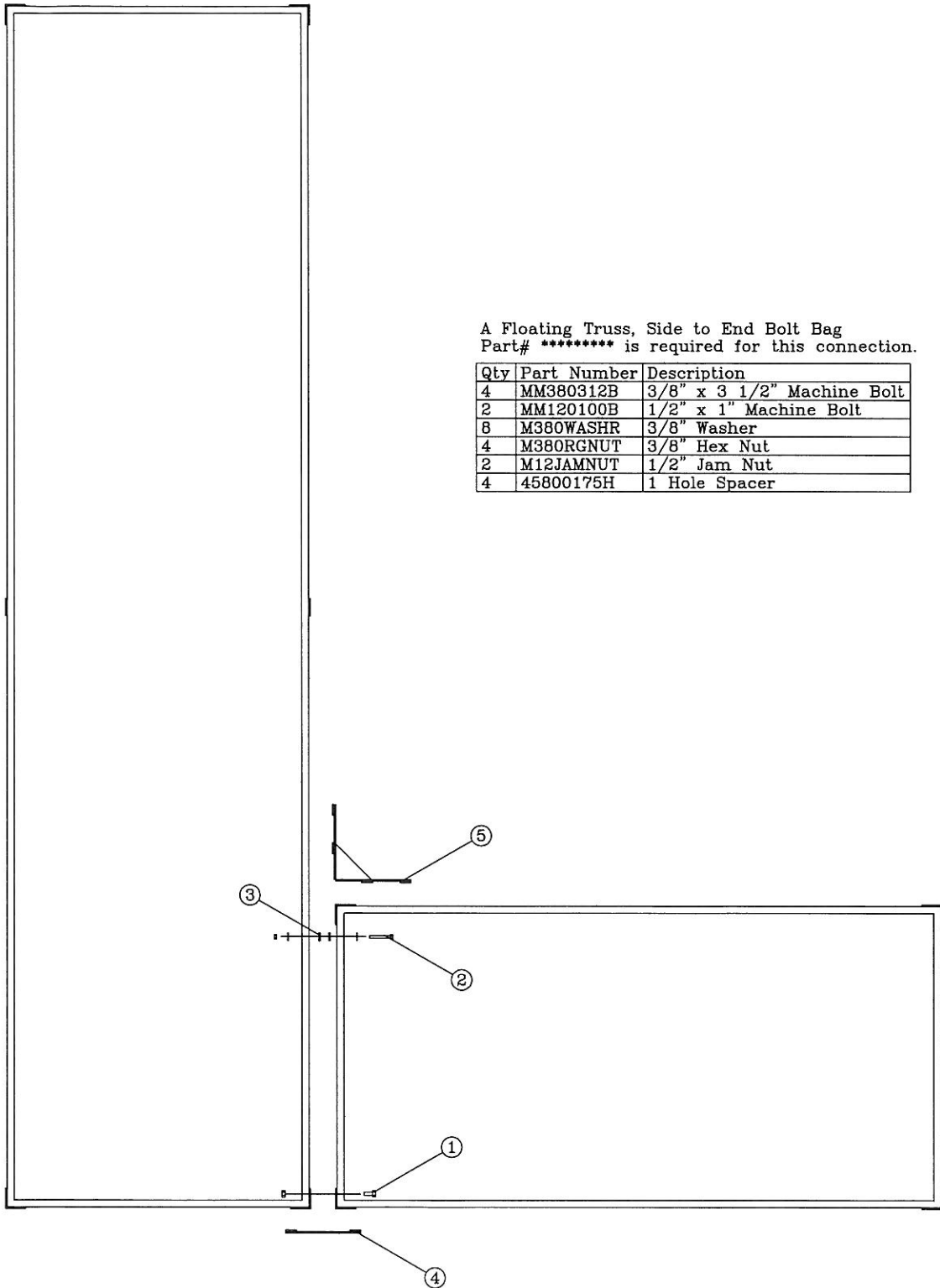


A Floating WAD, 16' Side by Side Bolt Bag
Part# ***** is required for this connection.

Qty	Part Number	Description
4	MM380312B	3/8" x 3 1/2" Machine Bolt
6	MM120100B	1/2" x 1" Machine Bolt
8	M380WASHR	3/8" Washer
4	M380RGNUT	3/8" Hex Nut
6	M12JAMNUT	1/2" Jam Nut
8	45800175H	1 Hole Spacer

1. (2) 1/2" X 1" Machine Bolts, (2) 1/2" Jam Nuts.
2. (2) 3/8" x 3 1/2" Bolt, (2) 3/8" Washers and (1) 3/8" Nut.
3. (4) 1/4" Spacers
4. Solid State Connector or Pipe bracket

Floating Truss Dock Side To End Connection - 1

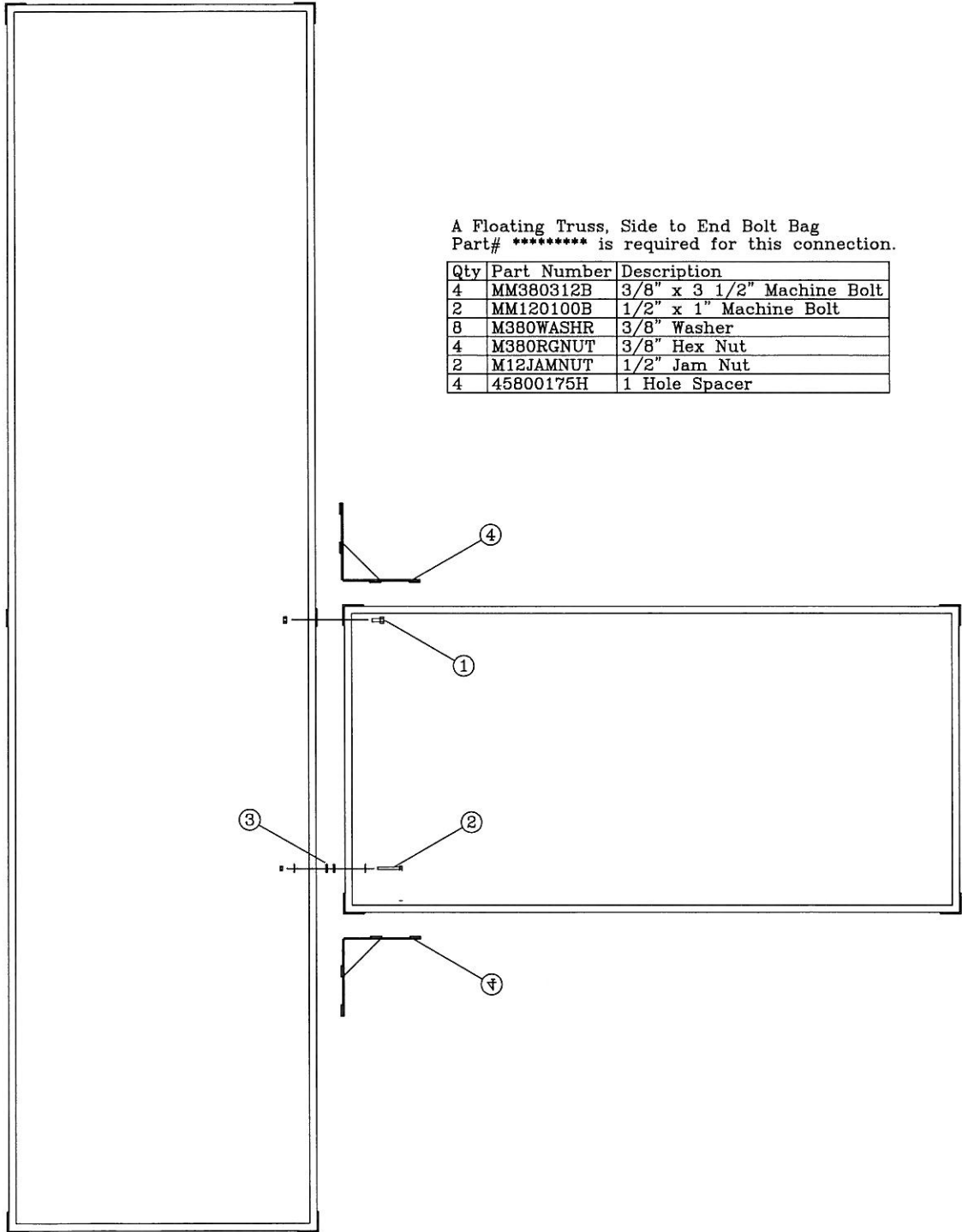


A Floating Truss, Side to End Bolt Bag
Part# ***** is required for this connection.

Qty	Part Number	Description
4	MM380312B	3/8" x 3 1/2" Machine Bolt
2	MM120100B	1/2" x 1" Machine Bolt
8	M380WASHR	3/8" Washer
4	M380RGNUT	3/8" Hex Nut
2	M12JAMNUT	1/2" Jam Nut
4	45800175H	1 Hole Spacer

1. (2) 1/2" x 1" Machine Bolts and (2) 1/2" Jam Nuts
 2. (2) 3/8" x 3 1/2" Bolts, (4) 3/8" Washers and (2) 3/8" Nuts.
 3. (4) 1/4" Spacers
 4. Solid State Connector or Pipe Bracket
 5. Solid State Corner
- 60177A.DWG

Floating Truss Dock Side To End Connection - 2

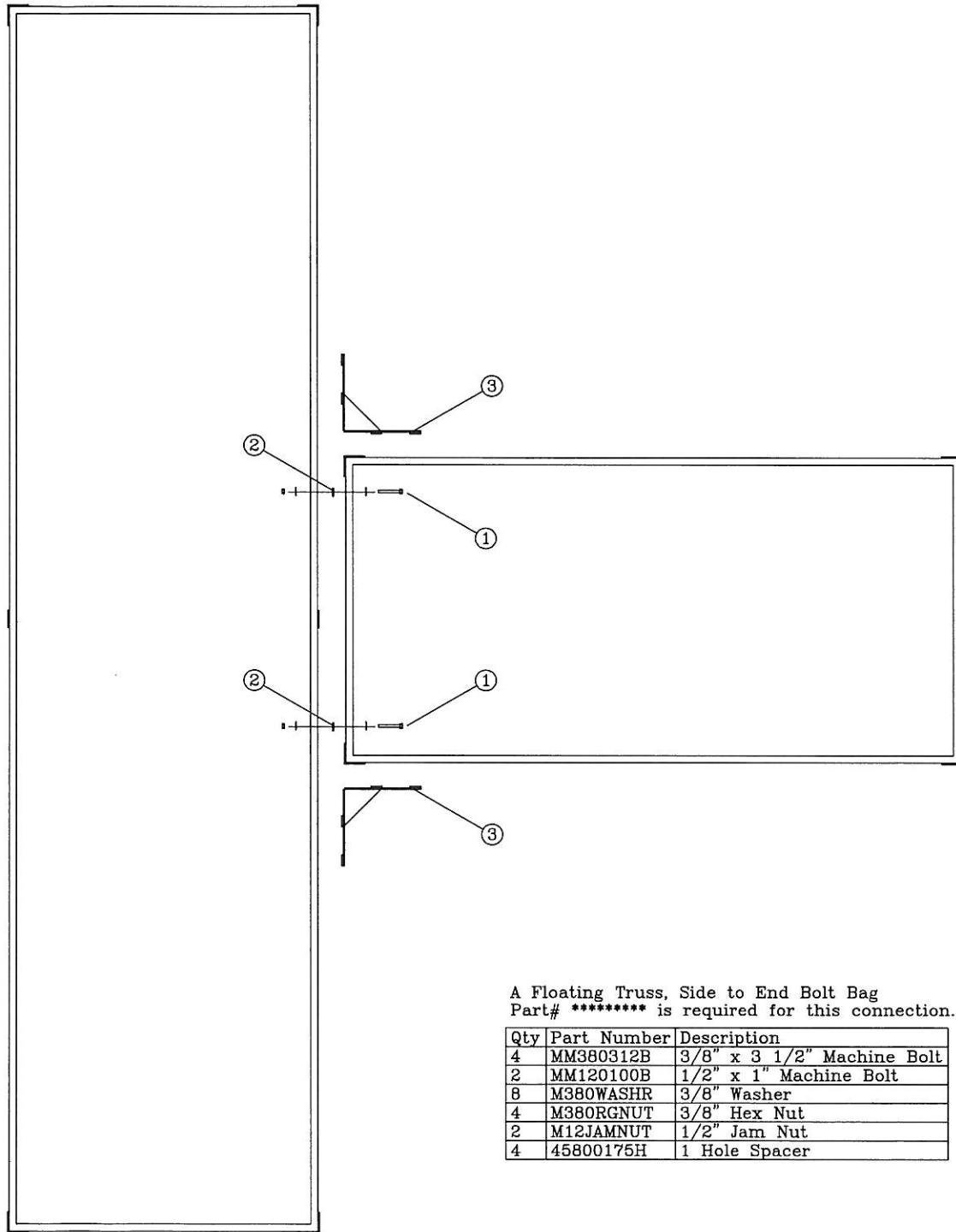


A Floating Truss, Side to End Bolt Bag
Part# ***** is required for this connection.

Qty	Part Number	Description
4	MM380312B	3/8" x 3 1/2" Machine Bolt
2	MM120100B	1/2" x 1" Machine Bolt
8	M380WASHR	3/8" Washer
4	M380RCNUT	3/8" Hex Nut
2	M12JAMNUT	1/2" Jam Nut
4	45800175H	1 Hole Spacer

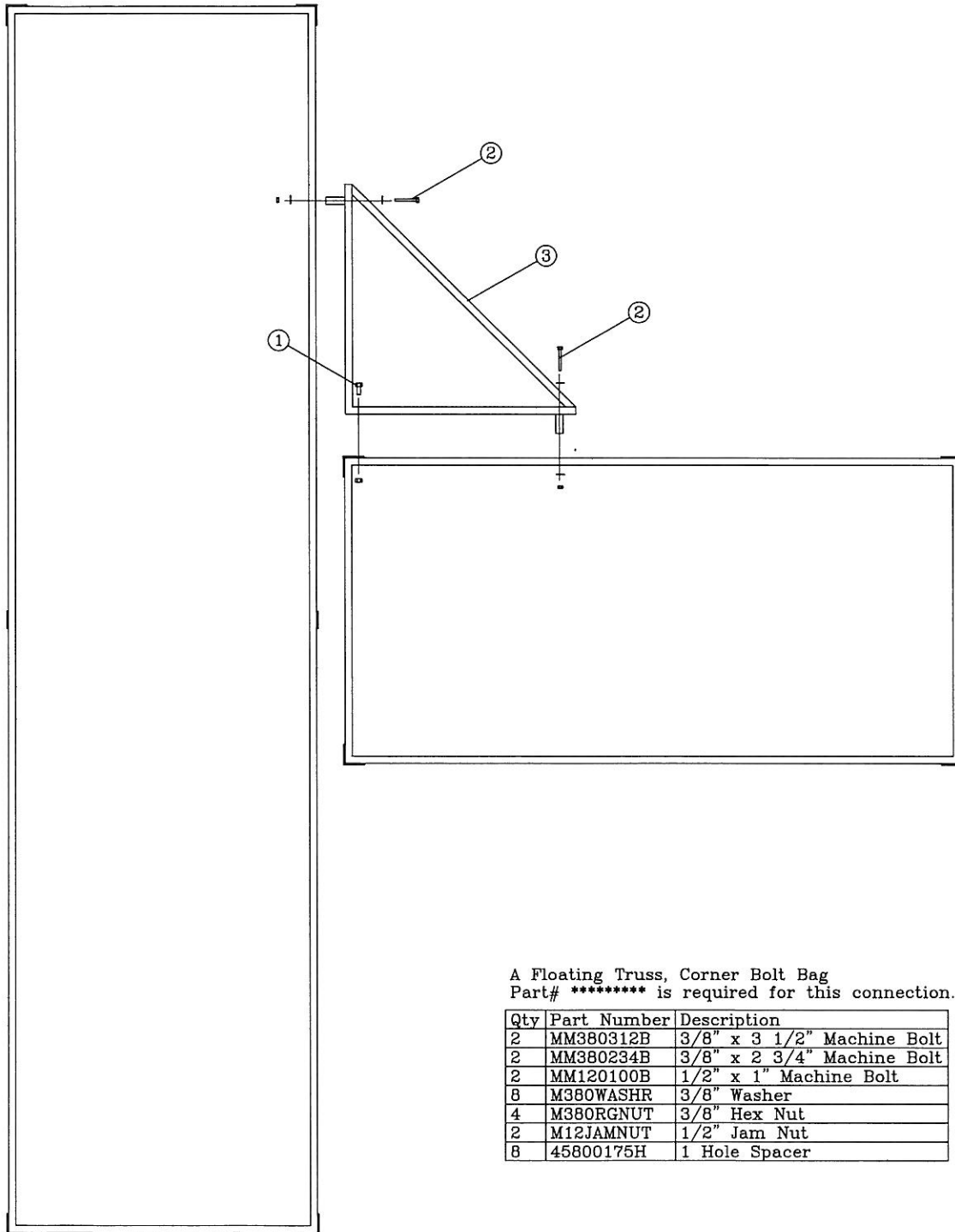
1. (2) 1/2" x 1" Machine Bolts and (2) 1/2" Jam Nuts
 2. (2) 3/8" x 3 1/2" Bolts, (4) 3/8" Washers and (2) 3/8" Nuts.
 3. (4) 1/4" Spacers
 4. Solid State Connector or Pipe Bracket
 5. Solid State Corner
- 60177A.DWG

Floating Truss Dock Side To End Connection - 3



1. (2) 3/8" x 3 1/2" Bolts, (4) 3/8" Washers and (2) 3/8" Nuts.
 2. (2) 1/4" Spacers
 3. Solid State Corner
- 60177A.DWG

Floating Truss Dock Corner Section Connection



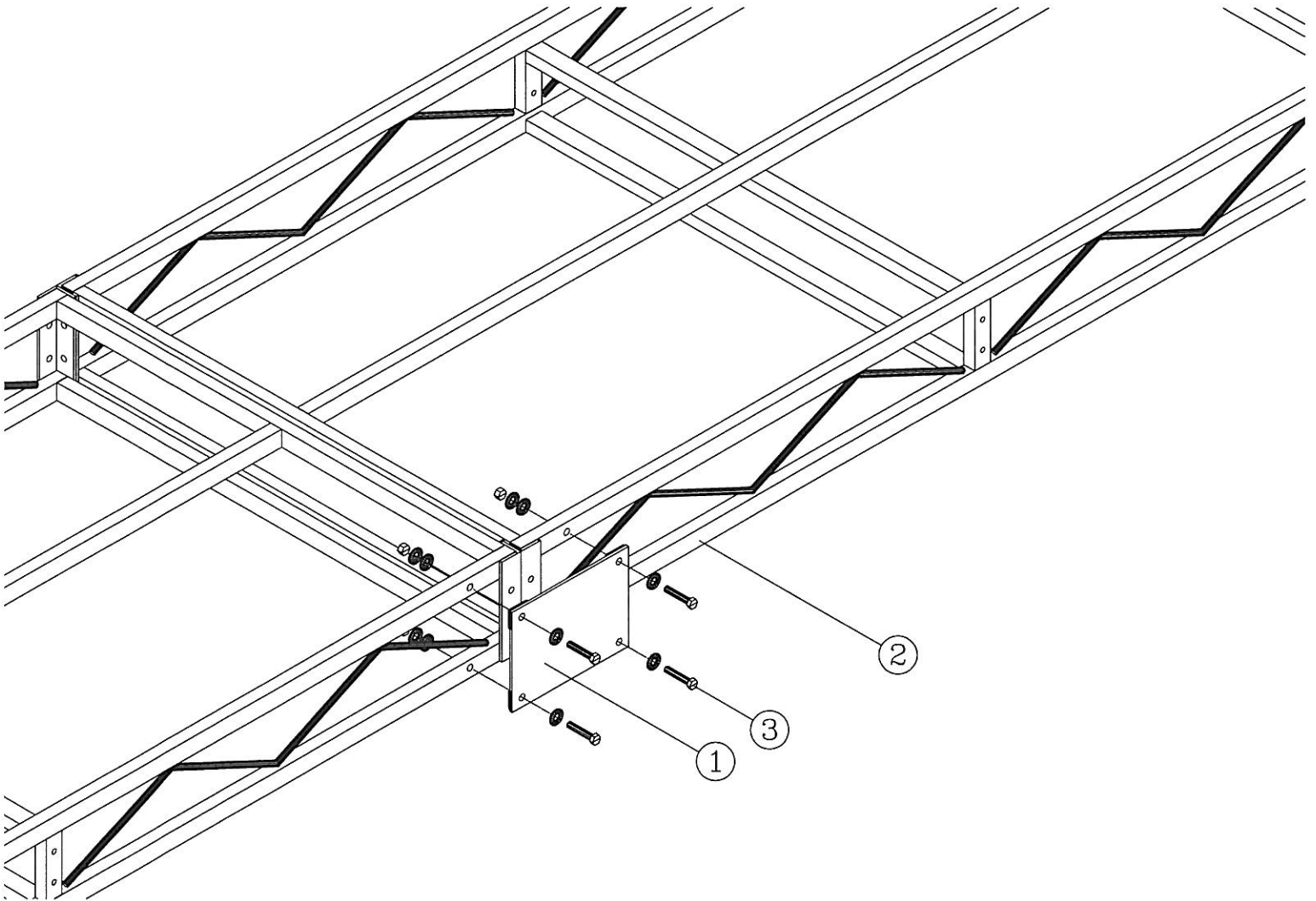
A Floating Truss, Corner Bolt Bag
Part# ***** is required for this connection.

Qty	Part Number	Description
2	MM380312B	3/8" x 3 1/2" Machine Bolt
2	MM380234B	3/8" x 2 3/4" Machine Bolt
2	MM120100B	1/2" x 1" Machine Bolt
8	M380WASHR	3/8" Washer
4	M380RGNUT	3/8" Hex Nut
2	M12JAMNUT	1/2" Jam Nut
8	45800175H	1 Hole Spacer

1. (2) 1/2" x 1" Machine Bolt, (2) 1/2" Jam Nuts
 2. Top Rail - (1) 3/8" x 3 1/2" Machine Bolt, (1 or 2) 1/4" Spacers as needed, (2) 3/8" Washers and (1) 3/8" Nuts.
Bottom Rail - (1) 3/8" x 2 3/4" Machine Bolt, (1 or 2) 1/4" Spacers As Needed, (2) 3/8" Washers and (1) 3/8" Nut.
 3. Corner Section
- 80177A.DWG

Truss Dock, Solid State Connector

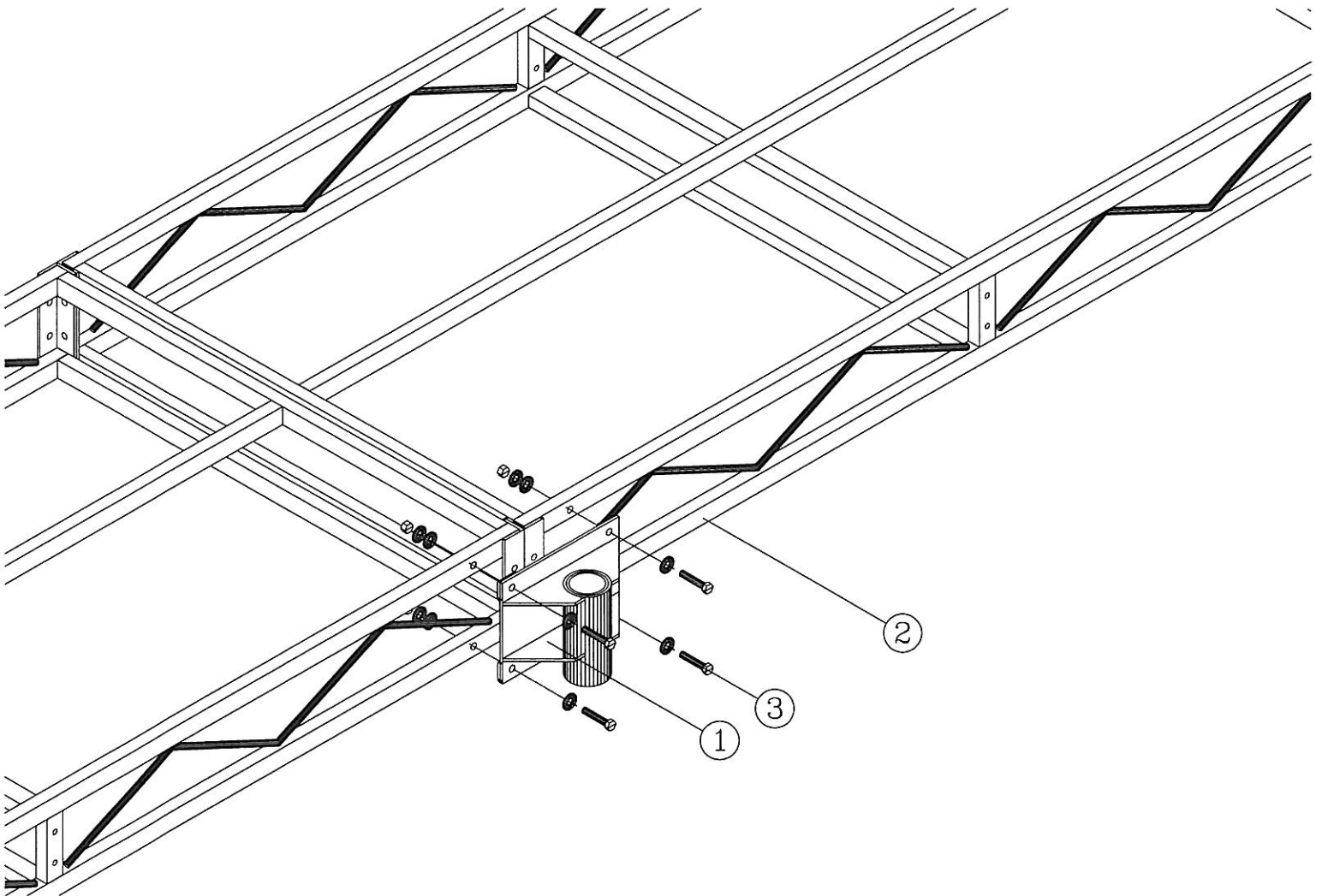
Clamp the Truss Dock sections together. Use the Solid State Connector as a guide to mark the hole locations on the dock rail. Drill four $9/16$ " holes in the dock rail. Attach the Solid State Connector with (4) $1/2$ " x $2 1/2$ " machine bolts, (8) $1/2$ " washers, (4) $1/2$ " lock washers and (4) $1/2$ " nuts. The lock washer goes between the flat washer and the nut.



1. Solid State Connector
2. Truss Dock Rail
3. (1) $1/2$ " X $2 1/2$ " Machine Bolt, (2) $1/2$ " Washers, (1) Lock Washer and (1) $1/2$ " Nut. (4 Places)

Truss Dock, Pipe Bracket

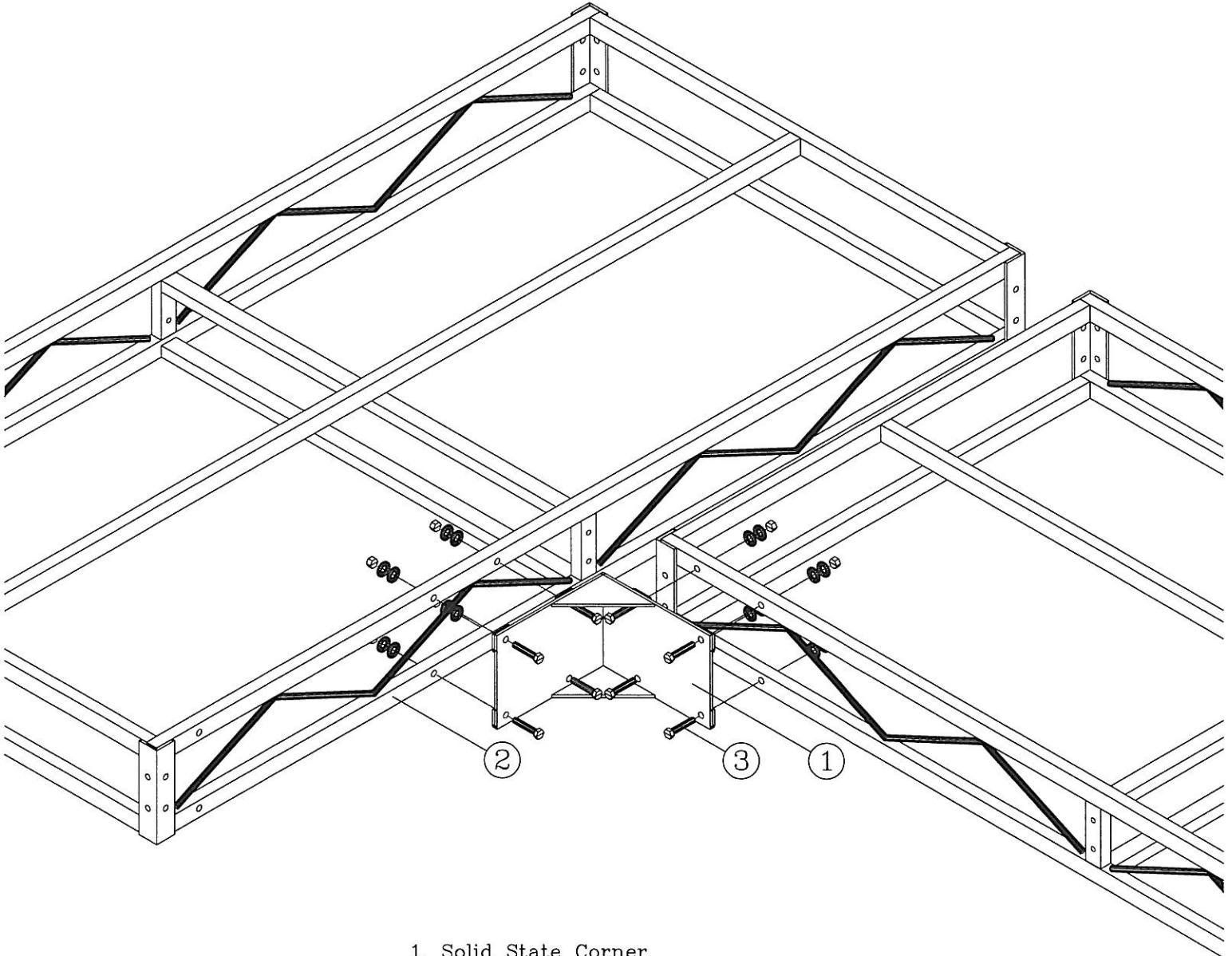
The Pipe Bracket may be installed in place of a Solid State Connector, to connect two dock sections, or it may be installed anywhere along the dock rail that a pipe is needed. To install in place of a S.S. Connector bolt or clamp the Truss Dock sections together. Use the Pipe Bracket as a guide to mark the hole locations on the dock rail. Drill four $9/16$ " holes in the dock rail. Attach the Pipe Bracket with (4) $1/2$ " x $2 1/2$ " machine bolts, (4) $1/2$ " washers, (4) $1/2$ " lock washers and (4) $1/2$ " nuts. Make sure the lock washer is installed between the flat washer and the nut.



1. Pipe Bracket
2. Truss Dock Rail
3. (1) $1/2$ " X $2 1/2$ " Machine Bolt, (1) $1/2$ " Washer, (1) Lock Washer and (1) $1/2$ " Nut. (4 Places)

Truss Dock, Solid State Corner

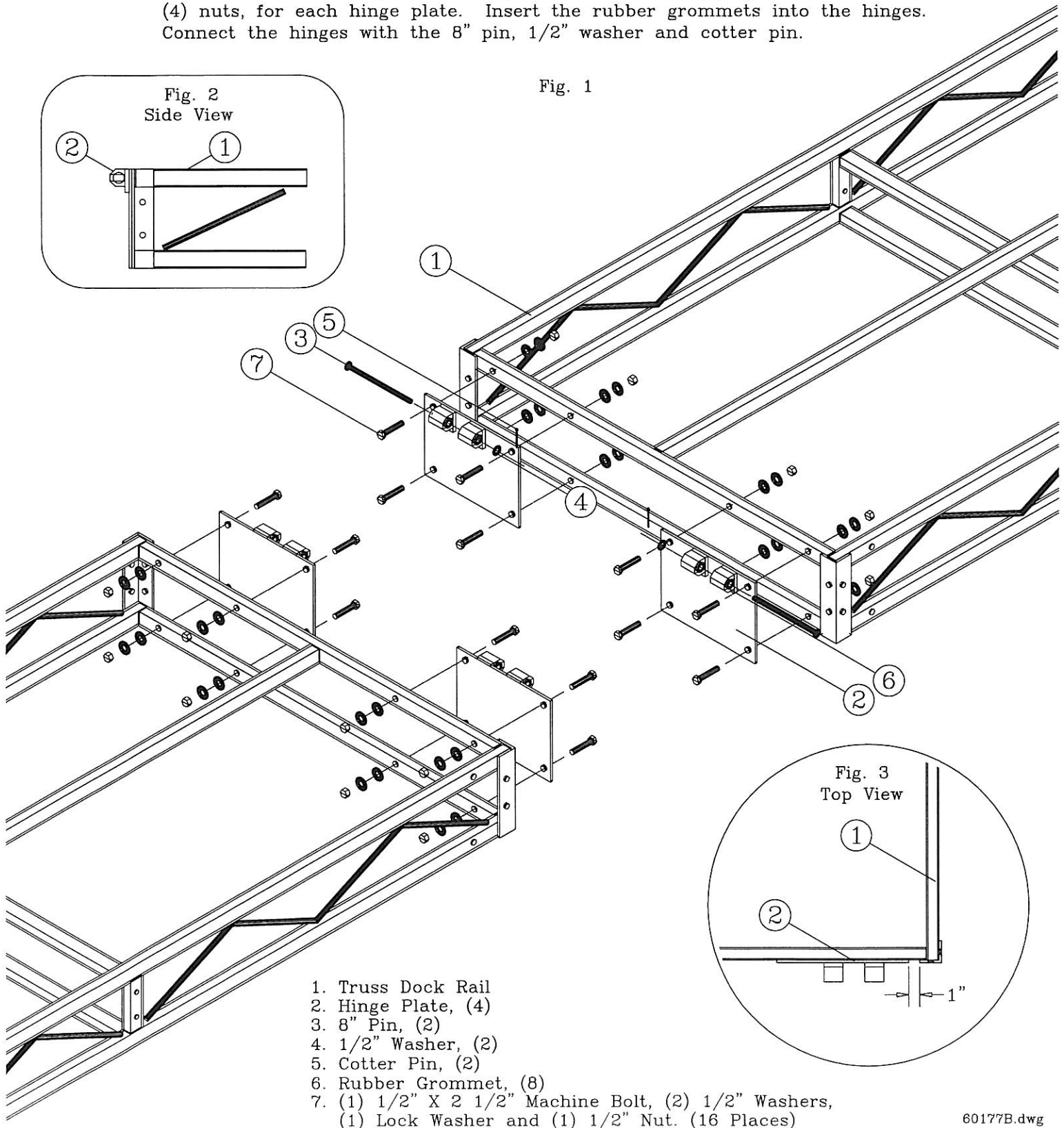
Bolt or clamp the Truss Dock sections together. Use the Solid State corner as a guide to mark the bolt hole locations on the dock rails. Drill eight 9/16" holes in the dock rail. Attach the Solid State Corner with (8) 1/2" x 2 1/2" machine bolts, (8) 1/2" washers, (8) 1/2" lock washers and (8) 1/2" nuts. The lock washer goes between the flat washer and the nut.



1. Solid State Corner
2. Truss Dock Rail
3. (1) 1/2" X 2 1/2" Machine Bolt, (1) 1/2" Washer,
(1) Lock Washer and (1) 1/2" Nut. (8 Places)

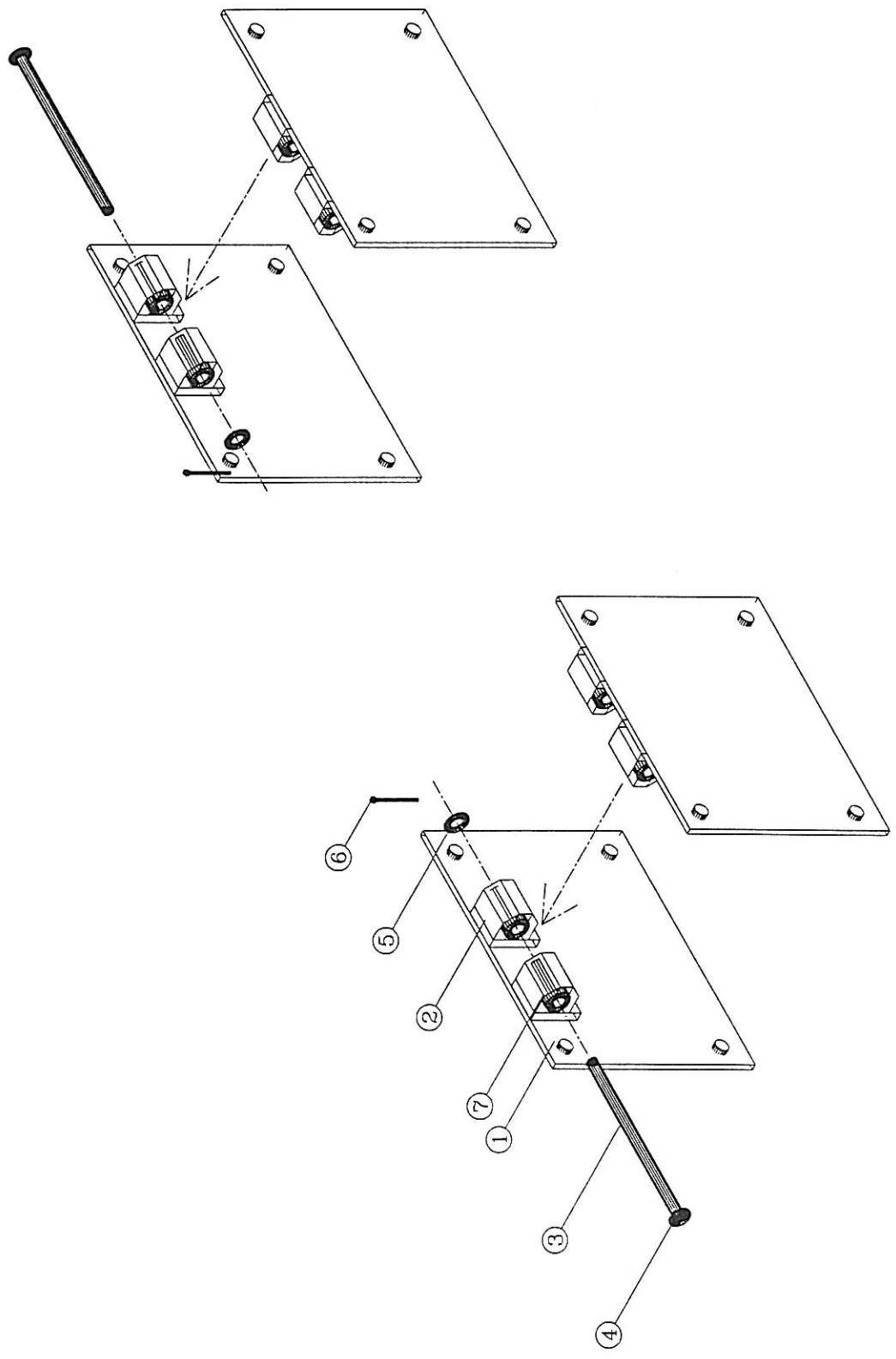
Truss Dock, Hinge Connector

Install two hinge plates on the end of each Truss Dock section, as shown in figure 1. Use the hinge plate as a guide to mark the location of the bolt holes. The hinge plate must be flush with the top of the dock rail, as shown in figure 2, and one inch from the corner angle, as shown in figure 3. Drill $9/16$ " holes in the dock rails. Attach the hinge plates to the dock rails with (4) $1/2$ " x $2 1/2$ " machine bolts, (4) $1/2$ " washers and (4) nuts, for each hinge plate. Insert the rubber grommets into the hinges. Connect the hinges with the 8" pin, $1/2$ " washer and cotter pin.



TRUSS

REV. CONFIDENTIAL



ITEM#	PART#	DWG#	DESCRIPTION
1	46701200D	60136-9A	PLATE, (4)
2	39800175H		PILLOW BLOCK, (8)
3	SS4414400		7/16" X 8" S.S. PIN, (2)
4	S716WASHR		7/16 S.S WASHER, (2)
5	S120WASHR		1/2" S.S WASHER, (2)
6	S180COTER		1/8" S.S. COTTER PIN, (2)
7	RR10134RG		RUBBER GROMMET, (8)

ALUMINUM DRIFT LIFTS, DOCKS & ACCESSORIES SHOREMASTER BY SHOREMASTER ENGINEERING 1 SHOREMASTER DRIVE, IND. PARK P.O. BOX 358 FERGUS FALLS, MN 56538-0358 (218) 739-4641	
REV	DESCRIPTION
---	PRODUCTION RELEASE
APPR'D	DATE

PART NAME:	
HINGE CONNECTOR - 9"	
DRAWN BY:	DATE:
KD	02-01-99
PART NUMBER:	REFERENCE:
DATDHGCON	
DWG #: 60136-9	

